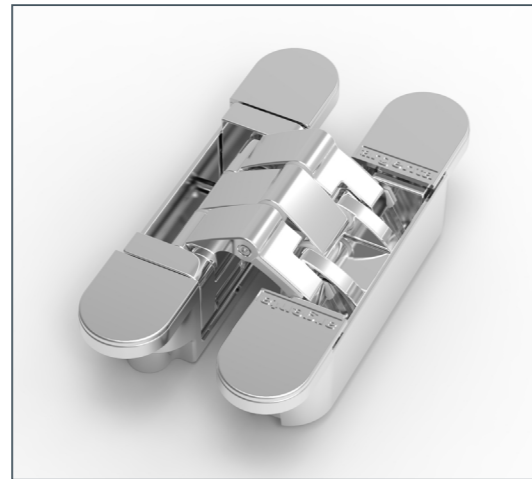
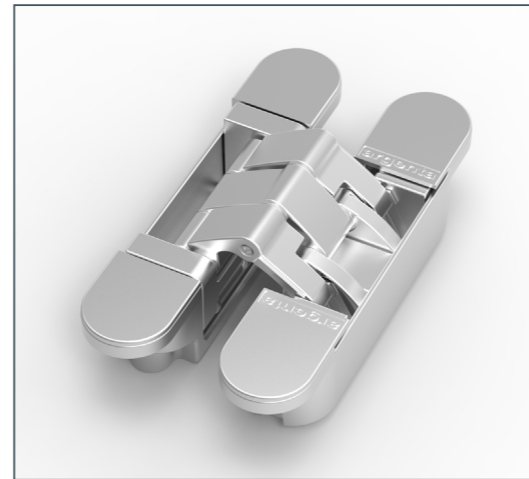


Invisible neo S-5



Blinkend chroom | Chromé brillant
Chrom glänzend | Glossy chrome



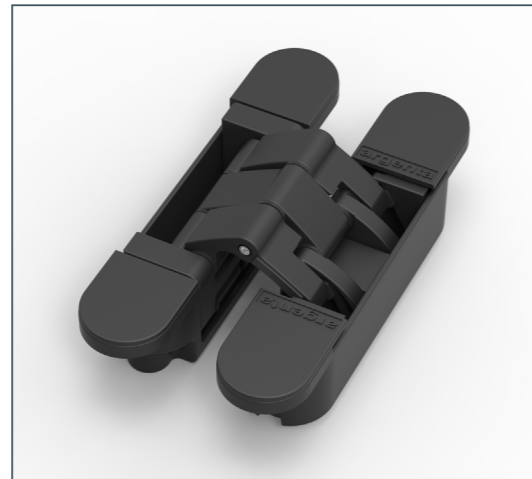
Mat chroom | Chromé mat
Chrom matt | Matt chrome



Wit | Blanc
Weiß | White



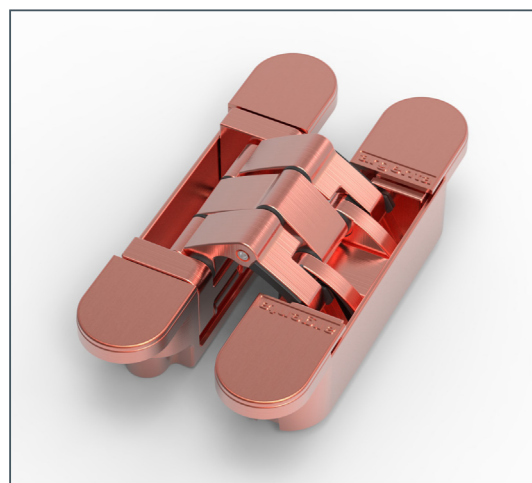
Inox look | Look inox
Edelstahl-Look | Stainless steel look



Zwart ombre | Ombre noir
Schwarz Umber | Black umber



Pekzwart | Goudron noir
Pech Schwarz | Tar black



Koper | Cuivre
Kupfer | Copper



CU (gepolijst messing) | CU (laiton polli)
CU (polliertem Messing) | CU (polished brass)



Bronz | Bronze
Bronze | Bronze



Donker bronz | Bronze foncé
Dunkel Bronze | Dark bronze



Klassiek bronz | Bronze classique
Klassische Bronze | Classic bronze